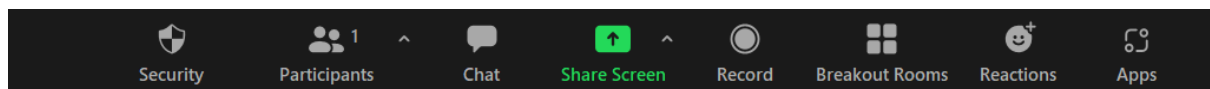


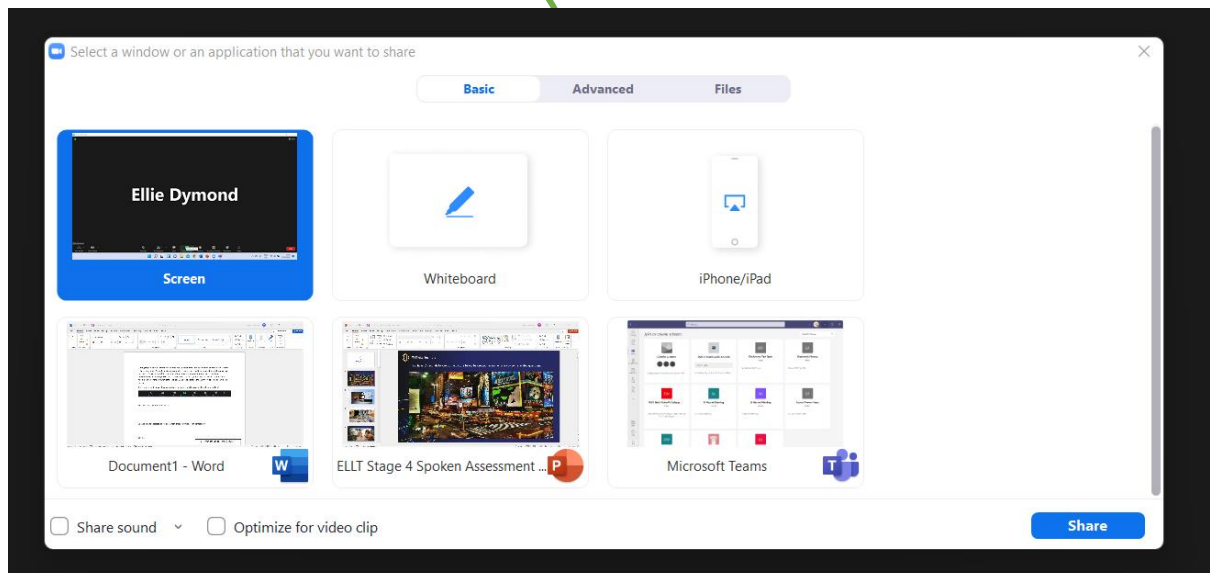
### Oxford ELLT Stage 4 Spoken Assessment Instructions

During stage 4 of the exam the candidate has 15 seconds to look at an image and then answer some related questions. You will need to decide which image you would like to use before the speaking interview. Please be mindful that some of the images have similar themes to that of the presentation and writing tasks – you should choose an image that does not relate to these. It is a good idea to have the PowerPoint slide open and ready before the interview so as to not delay or stress during.

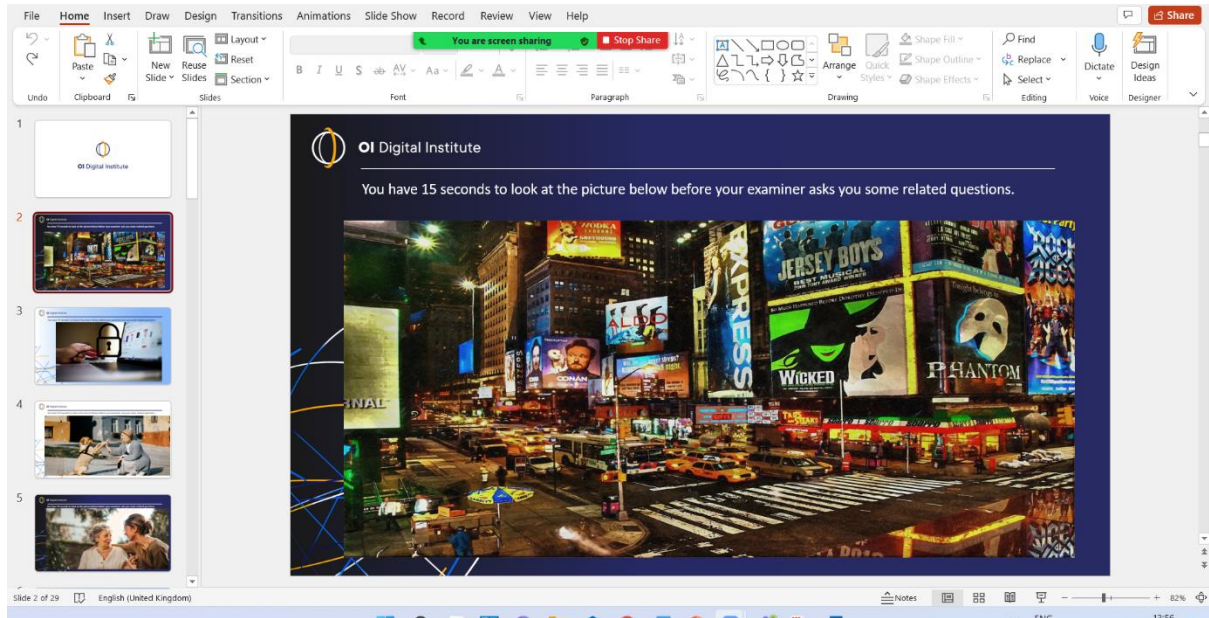
Once you move to stage 4, you can share your screen via the green 'Share Screen' button :



This will then open to look like this and you can select the desired screen (without having to share your entire desktop) and press share:



It will then open onto this screen; please be aware the PowerPoint will not be on Slideshow mode so you will need to then select this in order to maximise it (make it full screen):



Each slide has 6 related questions which gradually increase in complexity.



A2 - What is happening in the picture?

B1 - Describe a game that is popular in your country. Why do you think it is popular?

B1 - Do you think winning is important in games?

B2 - Which do you think is better, individual games or team-based games?

B2 - Do you think games such as this can help people relax and relieve stress? Why (not)? C1 - Some people love playing games online on their smartphones. Do you think this is a problem? Why (not)?

C1 - Do you think parents should play competitive board games with young children?

C2 - What can be done about the problem of gambling addiction?

<https://www.pexels.com/photo/photograph-of-a-group-of-friends-playing-poker-on-a-wooden-table-6962260/>



A1-What can you see in this picture?

A2-What are the people doing?

A2-How do you think the two people are feeling?

B1-Do you prefer to receive goods by mail, or to go shopping with friends?

B2- There has been a huge increase in the popularity of online shopping in recent years.

Why do you think that is?

C1-C2- Some people believe that robots and drones will soon replace traditional delivery methods. How likely do you think that is? Would this be a positive or negative development? Why?

<https://www.pexels.com/photo/man-in-red-jacket-delivering-a-red-and-white-box-6721906/>





A1- What can you see in this picture?

A2- What are the people doing?

B1- How do you think the two people are feeling?

B1 - What are the pros and cons of studying outdoors?

B2- V-Working away from a traditional office has become much more popular in recent years. What are the main reasons for this?

C1- What are the positive and negative impacts of this change?

C2- What influence do you think modern technology will have on working patterns over the next 10-20 years? Do you think this influence will be mostly beneficial for people and society? <https://www.pexels.com/photo/serious-diverse-guys-using-laptop-in-park-6140409/>



A1 – What can you see in this photograph?

A2 – Why are the people in this photograph doing this activity?

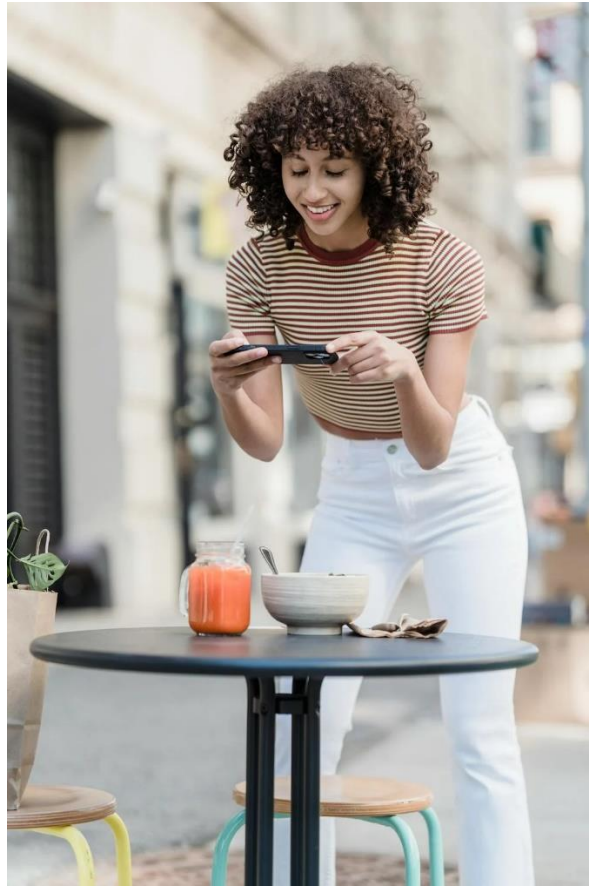
B1 – Have you ever been on a roller coaster? Where? (If no to above: Would you like to go to a roller coaster? Why/why not?)

B2 – What are some differences between the activities that young people find exciting and the ones that older people do? Why?

C1 – What kind of safety precautions must be taken on amusement park rides? Are the ones in the photo sufficient?

C2 – To what extent should amusement parks keep the cost of admission for patrons low (i.e., through government subsidies, customer coupons etc.)? Would this be economically feasible?

<https://images.pexels.com/photos/19546810/pexels-photo-19546810/free-photo-of-teenagers-on-the-roller-coaster-at-europa-park-theme-park-in-rust-germany.jpeg?auto=compress&cs=tinysrgb&w=1260&h=750&dpr=2>



A1 – What can you see in this photograph?

A2 – Why is this woman taking this photograph?

B1 – What do most people like taking photos of?

B2 – How is taking photos of everyday situations different from taking photos of special occasions?

C1 – In what ways can sharing photos on social media platforms create a sense of community?

C2 – To what extent do individuals overshare their lives online? What are some consequences of this?



A1 – What can you see this photograph?

A2 – Why are the people eating together?

B1 – How important is it to have a good relationship with your colleagues? (Why?)

B2 – What recommendations could you give to co-workers who do not get along?

C1 – What are the potential benefits and drawbacks of a working through lunch breaks? C2 – To what extent should all institutions offer their employees paid benefits (i.e., healthcare, dental care, sick leave etc.?) What considerations need to be taken into account?

Picture from: <https://images.pexels.com/photos/3184341/pexels-photo-3184341.jpeg?auto=compress&cs=tinysrgb&w=1260&h=750&dpr=2>





A1 – What can you see this photograph?

A2 – What is the relationship between the two children? Do you have any brothers or sisters?

B1 – How important is it to have a good relationship with your siblings? (Why?)

B2 – What recommendations could you give to siblings who do not get along?

C1 – In what ways has the size of families changed over time? What are some reasons for this?

C2 – To what extent has technology altered family dynamics? What are the implications of this?

Picture from: <https://images.pexels.com/photos/2005736/pexels-photo-2005736.jpeg?auto=compress&cs=tinysrgb&w=1260&h=750&dpr=2>



A2 - What is happening in the picture?

B1 - Have you ever moved house? Describe what you remember about the experience. B1 - Apart from cooking, are there any other skills that people need to learn if they live on their own?

B2 - How easy is it to find a place to live in your country?

B2 - What's the difference between living alone and living with housemates?

C1 - Do you think there is a right age for young adults to stop living with their parents? C1 - Do you agree that the kinds of homes people prefer change as they get older? C2 - How do relationships between neighbours differ in cities and in the countryside? C2 - Many landlords are known to take advantage of their tenants and charge them too much for rent and repairs. What can be done to control this?

<https://www.pexels.com/photo/a-couple-toasting-their-beer-bottles-7647394/>